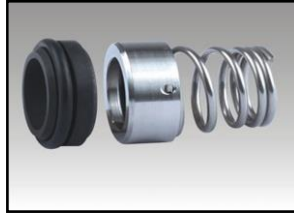


U2



The U2 are part of the 'O' ring mounted mechanical seals and are interchangeable with many other makes. The material combinations shown below are standard and other materials can be ordered on request.

BENEFITS

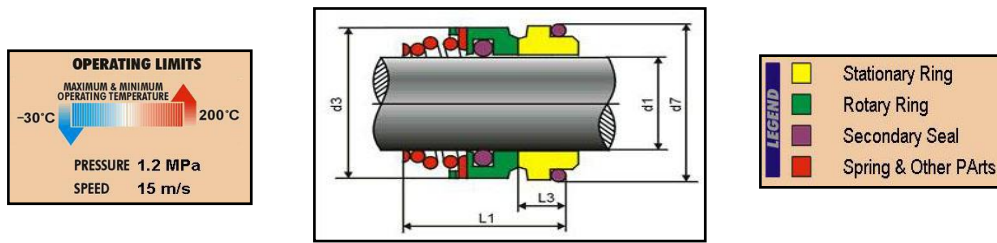
- Self Adjusting:** 'O' ring slides along shaft to allow for wear
- Non Clogging:** Due to open single spring design
- Simple Fitting:** Just push onto shaft
- Robust:** Due to simple construction

<u>Service Capability</u>	UNBALANCED 'O' RING TYPE SEALS	
Max. Speed – 20 m/sec		
Max Pressure: - 10 bar		
Temp: -40°C to 200°C		
Media: Dependant on materials		
* See P.V. Curves for max. Speed/pressure combination		
Note P.V. Curves for water 20°C		

Materials

- Rot Face: Car / SST / TC / Sil
- Stat Face: Car / SST / TC / Sil
- Spring: 304 Stainless Steel
- Elastomers: Nitrile / Viton / EPDM

MOSTLY USE: AVERAGE CORROSION MEDIUMS, SUCH AS WATER, OIL, WEAK ACID, WEAK ALKALI, ETC.



D	D1	D3	L1	D7	L2
10mm	18,1	19,0	15,0	21	5,5
12mm	20,6	21,0	18,0	23	5,5
14mm	23,1	23,0	22,0	25	6,0
16mm	26,9	26,0	23,0	27	7,0
18mm	30,9	29,0	24,0	33	8,0
20mm	30,9	31,0	25,0	35	8,0
22mm	35,4	33,0	25,0	37	8,0
24mm	35,4	35,0	27,0	39	8,0
25mm	38,2	36,0	27,0	40	8,5
28mm	43,3	40,0	29,0	43	9,0
30mm	43,3	43,0	30,0	45	9,0
32mm	43,3	46,0	30,0	48	9,0
33mm	53,5	46,0	39,0	48	11,5
35mm	53,5	49,0	39,0	50	11,5
38mm	60,5	53,0	39,0	56	11,5
40mm	60,5	56,0	39,0	58	11,5
43mm	60,5	59,0	39,0	61	11,5
45mm	65,5	61,0	41,0	63	11,5
48mm	65,5	64,0	41,0	66	11,5
50mm	72,5	66,0	45,0	70	11,5
55mm	72,5	71,0	47,0	75	11,5
60mm	79,3	78,0	49,0	80	11,5
65mm	84,5	84,0	51,0	85	11,5
70mm	89,5	89,6	51,0	92	11,5
75mm	94,5	98,0	57,0	97	11,5
80mm	99,5	100,0	59,0	105	11,5
85mm	105,5	107,5	59,0	110	13,5
90mm	111,5	111,0	62,0	115	13,5
95mm	116,5	119,0	62,0	120	13,5
100mm	119,5	123,8	75,0	125	13,5